

World's Best Drywall Lifts

Genuine **PANELLIFT** Brand [®]

OPERATOR'S MANUAL

MODEL 117



⚠ WARNING ⚠

Read and become familiar with this manual BEFORE operating unit.

Before operating this equipment, thoroughly read this set of instructions, make sure you understand them, and only then follow the step-by-step directions. Failure to do so could result in serious property damage and / or serious bodily injury.

To our valued customer,

Thank you for choosing a **Telpro Inc.** product by **PARAGON PRO** Manufacturing Solutions. We are pleased that we are able to provide equipment to make your work easier.

Our efforts are focused on producing the finest quality equipment of which we are capable. We make sure to spend extra time and effort on our design and production in order to reduce your time and effort spent using the product.

We take pride in providing the best for our customers. Quality, innovation, and excellence are all qualities this company ensures. No product is sent without being factory tested and inspected to ensure the highest quality for you.

It all began in 1972 when Roland Young designed our first product, the PANEL-LIFT® Brand Drywall Lift, and revolutionized the drywall industry. To this day we are continuously making advancements in manufacturing and design.

Thank you again for giving us the opportunity to work with you. Any questions or comments that you have are always welcome.

PARAGON PRO
MANUFACTURING SOLUTIONS

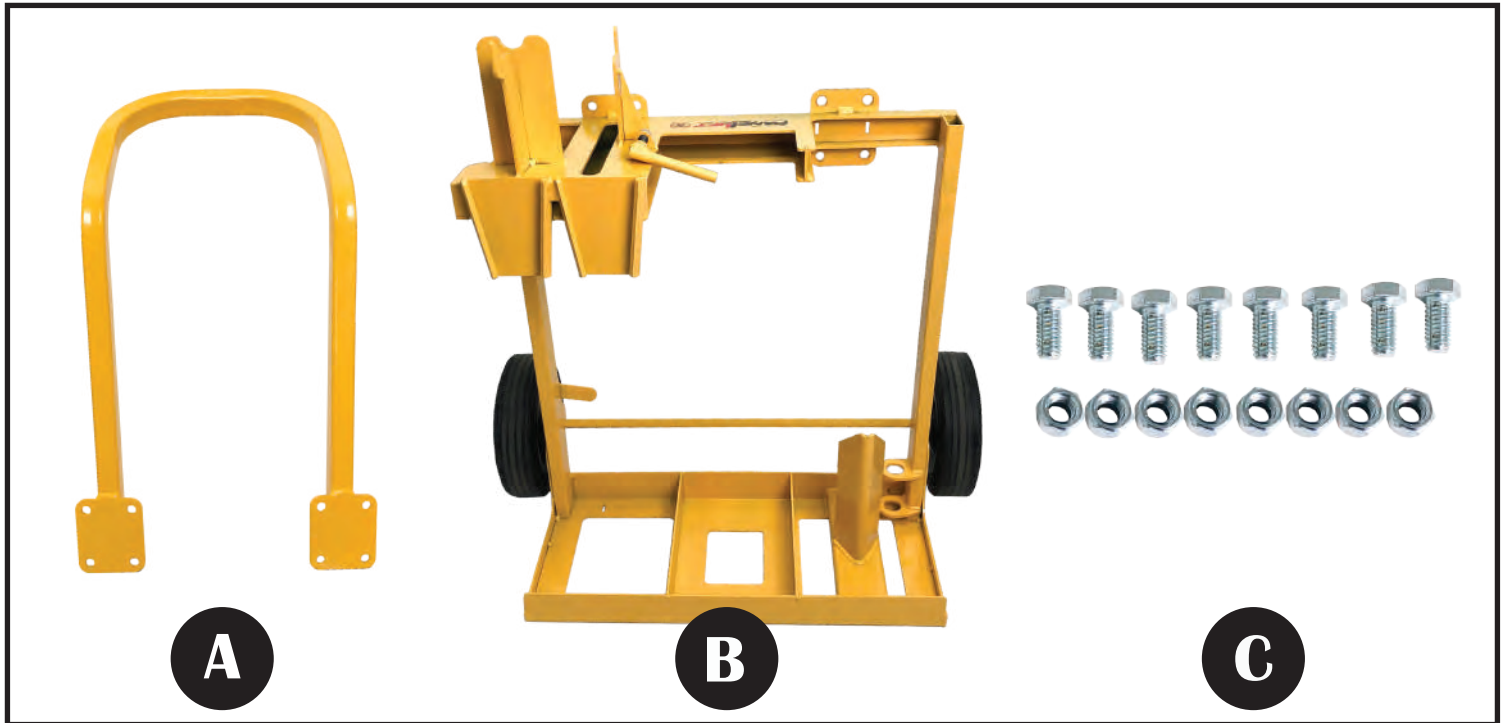
CONTENTS

Parts Index/ Assembly	Page 1
Loading up your Panellift	Page 2
Safety	Page 3
Warranty	Page 4

ALL PHOTOS ARE FOR ILLUSTRATIVE PURPOSES ONLY.

ALWAYS WEAR PROPER PERSONAL PROTECTIVE EQUIPMENT.

PARTS INDEX



A: 117 Handle

B: 117 Base

C: 3/8 x 3/4 NC Bolt Z & 3/8 NC Nylock Nut



ASSEMBLING



What You'll Need:

Tools

- (2) 9/16 Wrench

Included Assembly Parts

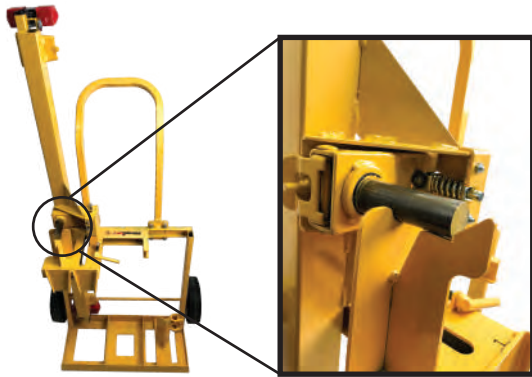
- (8) 3/8 x 3/4 NC Bolt Z
- (8) 3/8 NC Nylock Nut

1. Align the holes on the square peices of the handle and 117 Base unit followed by inserting the bolts in each hole to keep the handle in place.

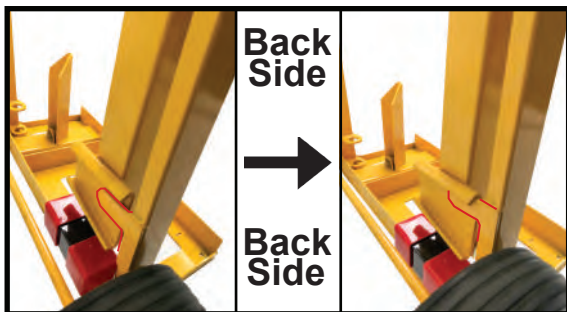
2. Tighten the nuts and bolts together with a 9/16 wrench.



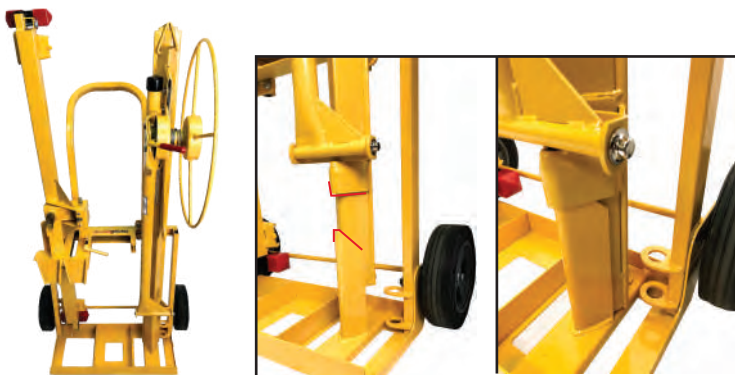
LOADING UP YOUR PANELLIFT



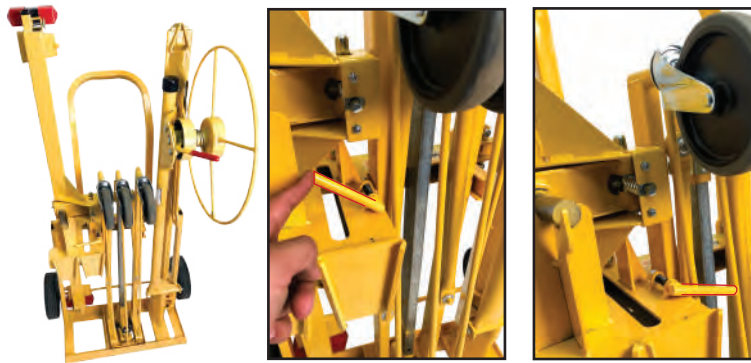
When loading your Panellift®, place the **Cradle** in first. Make sure the **Cradle** is secured and resting on the notch properly, as shown above.



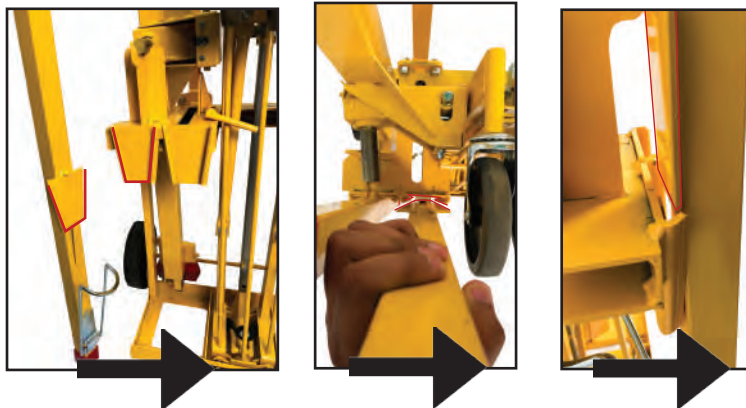
When placing the **Cradle**, it is also important to make sure the inserted area for the crossarms lays on top of the rounded bar sticking out the back of the 117.



The next step is to insert the **Frame Assembly** onto the 117. To do this, lift and align the V-shaped opening with the V-shaped piece pointing upward from the base of the 117, this should simply slide in.



The next piece to attach is the **Tripod**. Place it as shown above the center of the base. After doing so, it is important to flip the latch to secure the **Tripod**, preventing it from falling.



Finally, attach each of the **Crossarms** and insert them into the open trapezoidal slots that they fit into. (See images above for references.) Push them in until a "click" is heard, to ensure secure placement. After this final step, your Panellift® is fully loaded.



SAFETY INFORMATION

This product contains trace amounts of the following items which are known to cause.
These chemicals are not hazardous under product's intended use.
Please review CAS# for more information.

Chemical	Hazard	CAS#	% By Weight
Arsenic	Cancer	7440-38-2	Trace
Cadmium	Developmental	7440-43-9	Trace
Chromium	Cancer, Developmental	7440-47-3	Trace
Ethylbenzene	Cancer	100-41-4	Trace
Lead	Cancer	7439-92-1	Trace
Methanol	Developmental	67-56-1	Trace
Methylene Chloride (Dichloromethane)	Cancer	75-09-2	Trace
Nickel	Cancer	7440-02-0	Trace
Propylene glycol monobutyl ether	Cancer	5131-66-8	Trace
Toluene	Developmental	108-88-3	Trace
Carbon Black	Cancer	1333-86-4	Trace

WARRANTY

PARAGON PRO MANUFACTURING SOLUTIONS INC
LIMITED WARRANTY

TELPRO INC products manufactured by PARAGON PRO MANUFACTURING SOLUTIONS INC are warranted to be free from defects in material and workmanship under normal use for one year from date of purchase.

NOTE: The following components of the PANELLIFT® Model 439 Drywall Lift are warranted to be free from defects in material and workmanship under normal use for three years from date of purchase.

Part#	Description		
52-03	#35 chain assembly	52-05	#40 chain assembly
52-07	#50 chain assembly	52-09	1 1/4" #50 roller assembly
52-10	#Outer planet set w/ bronze	52-11	Drive assembly
52-11	#1/2" x 2 1/4" Shoulder bolt w/ fastners	52-15	Clutch assembly w/sprocket
52-16	#40 Winch drive chain		

If a TELPRO INC product is proven to be defective in material or workmanship within the covered time frame from the date of purchase, return the defective part to PARAGON PRO MANUFACTURING SOLUTIONS INC and we will either repair or replace the part at our option. We will neither assume nor authorize any other person to assume for us any other liability.

Written notice including commercial invoice detailing the nature of the defect, date of purchase, and the company from which you purchased your unit must be received and acknowledged by PARAGON PRO MANUFACTURING SOLUTIONS INC before any units may be returned. Shipping costs shall be the responsibility of the product purchaser.

This warranty shall not apply to any equipment that has been repaired or altered outside of the factory in any way so as in our judgment to affect its stability or reliability nor which has been subjected to abuse, misuse, or negligence.

PARAGON PRO MANUFACTURING SOLUTIONS INC reserves the right to make changes or improvements in design without incurring obligation to install the same on previous units.

PARAGON PRO MANUFACTURING SOLUTIONS INC shall not be liable for loss, damage, or expense directly or indirectly from use of its products, their transportation, their repair, or from any other cause. Acceptance of the manufacturer's product constitutes agreement to the terms of this warranty and further that the manufacturer shall have no liability for any special or consequential damages.

This Warranty is in lieu of all warranties express or implied.

Fill in the following information, attach a copy of your sales receipt or invoice and file in a safe place.

Date of purchase: _____/_____/_____

Name& model# _____

Serial #: _____



Questions about assembly?

Can't find a part?

Need some other help?

Call us: **PARAGON PRO**
MANUFACTURING SOLUTIONS

1.800.448.0822

701.775.0551

We'll get you set up!