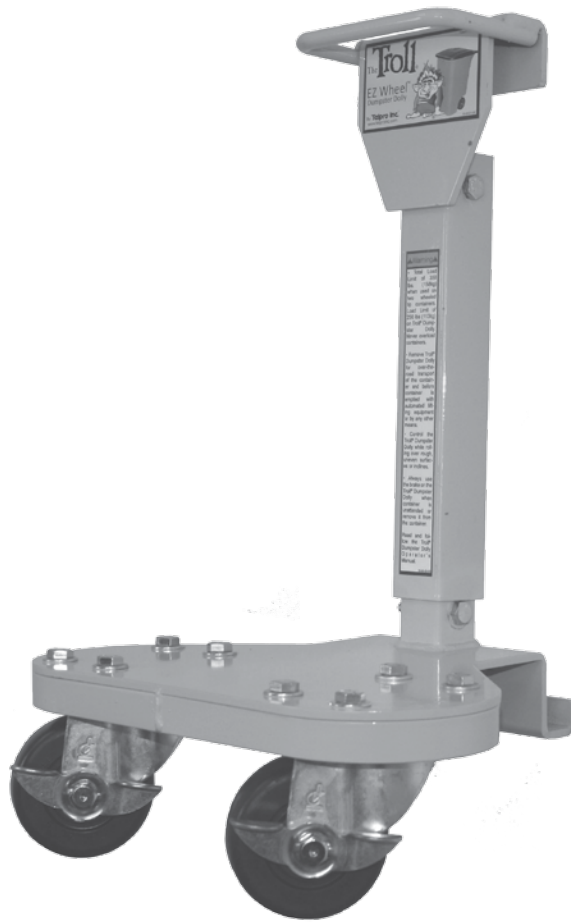


The **Troll**<sup>®</sup>  
EZ Wheel<sup>™</sup>  
Dumpster Dolly  
Patent 7,575,246



# OPERATOR'S MANUAL

**For Models 69 & 69D**



## ⚠ WARNING ⚠

Read and become familiar with this manual **BEFORE** operating unit.

Before operating this equipment, thoroughly read this set of instructions, make sure you understand them, and only then follow the step-by-step directions. Failure to do so could result in serious property damage and / or serious bodily injury.

**MADE BY** PARAGON PRO  
Manufacturing Solutions

---

To our valued customer,

Thank you for choosing a **Telpro Inc.**® product by **PARAGON PRO** Manufacturing Solutions. We are pleased that we are able to provide equipment to make your work easier.

Our efforts are focused on producing the finest quality equipment of which we are capable. We make sure to spend extra time and effort on our design and production in order to reduce your time and effort spent using the product.

We take pride in providing the best for our customers. Quality, innovation, and excellence are all qualities this company ensures. No product is sent without being factory tested and inspected to ensure the highest quality for you.

It all began in 1972 when Roland Young designed our first product, the PANELLIFT® Brand Drywall Lift, and revolutionized the drywall industry. To this day we are continuously making advancements in manufacturing and design.

Thank you again for giving us the opportunity to work with you. Any questions or comments that you have are always welcome.

**PARAGON PRO**  
M a n u f a c t u r i n g   S o l u t i o n s

# ⚠ Warning ⚠

Read and follow these warnings and the instructions that follow. Failure to do so could result in serious property damage and/or serious bodily injury.

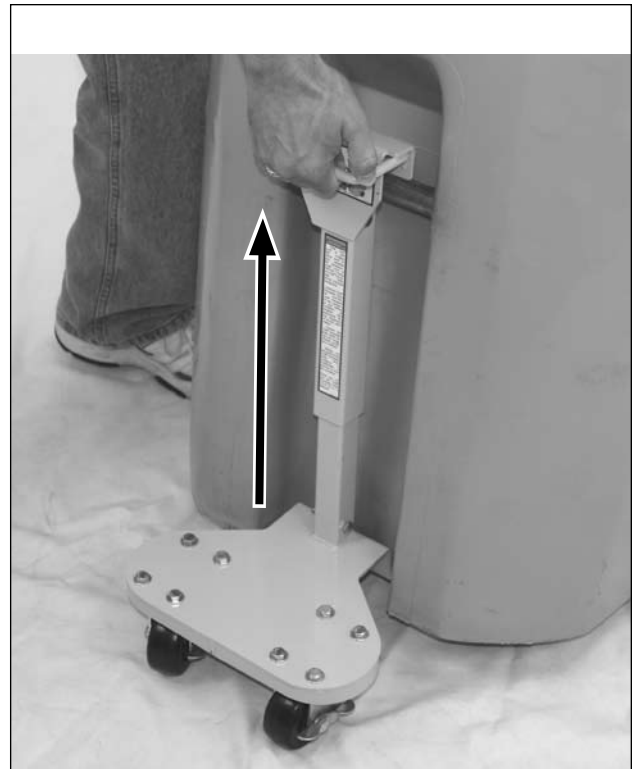
**BEFORE** operating this equipment, thoroughly read this set of instructions, make sure you understand them, and only then follow the step-by-step directions.

**FAILURE TO READ AND FOLLOW THESE INSTRUCTIONS** could result in failure of the equipment possibly resulting in serious property damage and/or serious bodily injury.

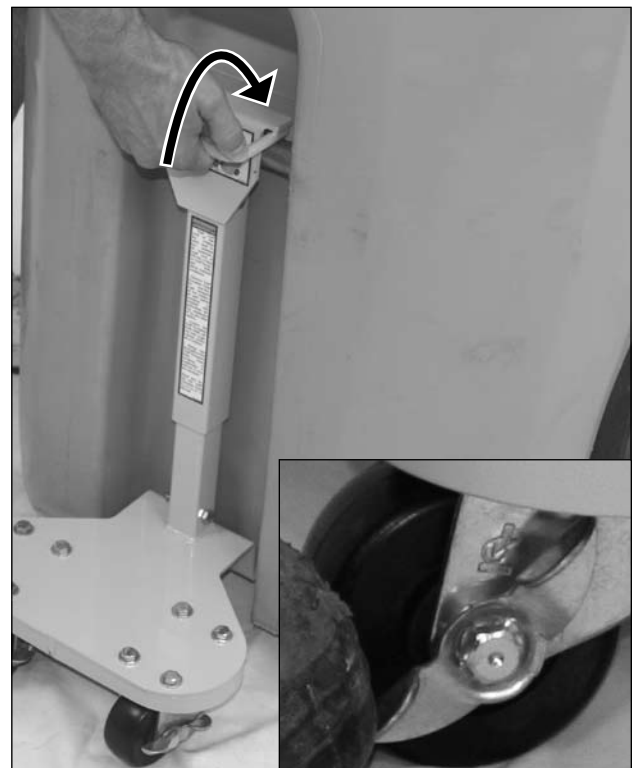
- The Troll® EZ Wheel™ Dumpster Dolly is designed and intended only for use on roll out waste containers and shall be used for no other purpose.
- Total Load Limit of 350 lbs. (158kg) when used on two wheeled tip containers. Load Limit of 250 lbs (113kg) on Troll® EZ Wheel™ Dumpster Dolly. Never overload containers.
- Remove the Troll® EZ Wheel™ Dumpster Dolly for over-the-road transport of the container and before container is emptied with automated lifting equipment or by any other means.
- Control the Troll® EZ Wheel™ Dumpster Dolly while rolling over rough, uneven surfaces or inclines.
- Always set the brake on the Troll® EZ Wheel Dumpster Dolly when container is unattended or remove it from the container.
- **DO NOT** allow children to use the Troll® EZ Wheel™ Dumpster Dolly. Loaded containers with the Troll® EZ Wheel™ Dumpster Dolly attached may weigh more than a child can safely control.
- **DO NOT** use if the Troll® EZ Wheel™ Dumpster Dolly cannot be made to securely fasten to your particular waste container.
- **DO NOT** use if any part is damaged not properly functioning. Order a replacement part immediately.



1) Place the lower hook of the Troll® EZ Wheel™ under the front edge of the container.



2) Pull up on the handle of the Troll® EZ Wheel™.



3) Secure the top hook of the Troll® EZ Wheel™ over the bar on the container. **ALWAYS** set the brake when the container is unattended or remove the Troll® EZ Wheel™ from the container.

**This product contains trace amounts of the following items which are known to cause cancer and/or developmental harm in the state of California.**

These chemicals are not hazardous under product's intended use.

Please review CAS# for more information.

<b>Chemical</b>	<b>Hazard</b>	<b>CAS#</b>	<b>% By Weight</b>
Arsenic	Cancer	7440-38-2	Trace
Cadmium	Developmental	7440-43-9	Trace
Chromium	Cancer, Developmental	7440-47-3	Trace
Ethylbenzene	Cancer	100-41-4	Trace
Lead	Cancer	7439-92-1	Trace
Methanol	Developmental	67-56-1	Trace
Methylene Chloride (Dichloromethane)	Cancer	75-09-2	Trace
Nickel	Cancer	7440-02-0	Trace
Propylene glycol monobutyl ether	Cancer	5131-66-8	Trace
Toluene	Developmental	108-88-3	Trace







---

## **For Parts and Service Contact:**

### **Paragon Pro Manufacturing Solutions**

7251 S 42nd St.

Grand Forks, ND 58201

USA

1-701-775-0551

1-800-448-0822

[sales@paragonpromfg.com](mailto:sales@paragonpromfg.com)